

HighFlow Grout 65

Cementitious high strength non-shrink precision grout

Product Description

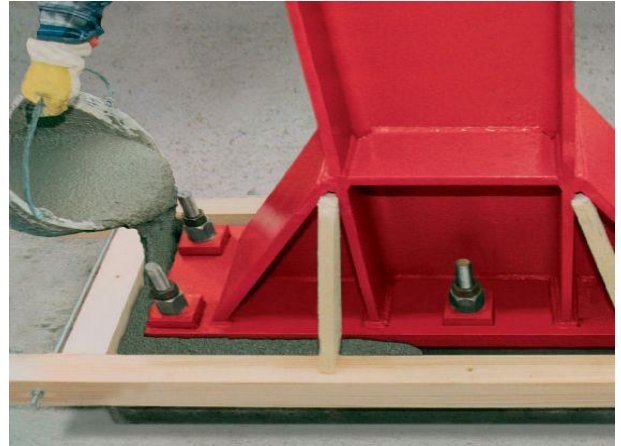
HighFlow Grout65 is a cement based , pre-mixed chloride free self compacting cementitious grout. It is high strength flowable mortar, which is non shrink mortar despite of its very high flowability.

Areas of Application

- Machinery foundations and machine beds.
- Stanchion bases, struts, railing, and guardrail assemblies.
- Joints of prefabricated concrete elements.
- Filling of shutter tie rod openings.
- Between anchors of steel constructions.
- Mounting of tanks and silo columns.
- Pile top re-profiling.
- Exterior concrete, partition and column heads, determination of track beds.
- Fixing of the industrial machines on the foundations.
- Filling of hollows and craters in concrete.

Advantages

- Mixed with only water and can be applied easily.
- Extremely dense and low permeability.
- High compressive strength.
- High fluid consistency can be poured or pumped into variable gap widths down to 10 mm.
- Free of bleeding.
- Resistant to water and weather conditions.
- Perfect bonding to the concrete and steel.
- Non-shrink.



Disposal

Empty packages can be thrown to the collection bins according to regional-local regulations or recycling rules. After drying up and hardening the used waste material, throw it away as construction waste material. It is dangerous to dispose of product wastes by burning them.

Points to Take into Consideration

Keep the products in places out of reach of children. Always keep the cover of the products closed. It is recommended to wear gloves and goggles during operation. In case of contact of skin with the material, it should be washed with soap and water immediately. In case of contact with the eye, see your doctor immediately.

General Considerations

Above-mentioned product information and descriptions are prepared for guidance purposes as a result of our experiences and meticulous studies. The variety of related materials and their different construction and operation conditions can not be controlled or influenced by us individually. For applications beyond our control, the guarantee status is only limited to the quality of sold product. Except the manufacturing of the product, no guarantee is given for application. This technical sheet invalidates all the existing sheets. The quality of the performed job may vary depending on your professional use of the product. If you are hesitant, make a little test or get technical help.

HighFlow Grout 65

Cementitious high strength non-shrink precision grout

Thickness and size limitation

HighFlow Grout65 can be applied in a single layer at thickness between 10-150 mm. for greater thickness; an 8-12 mm washed aggregate should be added at a ratio of 10kg of washed aggregate to 25kg of HighFlow Grout65.

When HighFlow Grout65 uses as a repair material for segregation places, it must be mixed with water and used as a repair paste.

Method of use

Surface preparation

The concrete should be free of frost, curing membranes, waterproofing treatments, oil stains, laitance, friable material and dust. The concrete surfaces should be chipped and if there is a water leakage it must be drained or properly plugged. Base plate, rods and bolts should be free of oil stains, grease and dust. Enough number of holes should be opened on the base plate for air drain. Machine should be assembled and balanced before grouting. The concrete surface should be saturated with water at least 6 hours before the grouting.

Technical Data

Property:	
Solid content:	100%
Color:	White and Grey
Elasticity modulus	8 MPa
Re-coatable time	Min 15-16 hours @ 25 °C
Compressive strength: BS1881, part 116 , TS EN 196 & ASTM C109/109M-02	≥ 25 MPa @ 1day ≥ 50 MPa @ 7days ≥ 65 MPa @ 28days
Flexural strength: BS6319,Part3,1998	≥ 2.0 MPa @ 1 day ≥ 7.5 MPa @ 7 days ≥ 9.0 MPa @ 28 days
Fresh wet density	2100 Kg/ m3
Application temperature	+3 °C to 55 °C
Service temperature	-30 °C to 200 °C

Disposal

Empty packages can be thrown to the collection bins according to regional-local regulations or recycling rules. After drying up and hardening the used waste material, throw it away as construction waste material. It is dangerous to dispose of product wastes by burning them.

Points to Take into Consideration

Keep the products in places out of reach of children. Always keep the cover of the products closed. It is recommended to wear gloves and goggles during operation. In case of contact of skin with the material, it should be washed with soap and water immediately. In case of contact with the eye, see your doctor immediately.

General Considerations

Above-mentioned product information and descriptions are prepared for guidance purposes as a result of our experiences and meticulous studies. The variety of related materials and their different construction and operation conditions can not be controlled or influenced by us individually. For applications beyond our control, the guarantee status is only limited to the quality of sold product. Except the manufacturing of the product, no guarantee is given for application. This technical sheet invalidates all the existing sheets. The quality of the performed job may vary depending on your professional use of the product. If you are hesitant, make a little test or get technical help.

HighFlow Grout 65

Cementitious high strength non-shrink precision grout

Mixing

Add enough water into a clean mixing bucket by using a proper water gauge. Add the powder into the bucket slowly and continuously. Mix the fresh mortar with a proper electrical mixer (300-600 rpm) for 4 minutes until having a homogenous consistency. Let the mortar have rest for 4 minutes and re-mix for 30 seconds.

Placing and Finishing Under Base plate:

Enough material should be available to achieve continuous fill and to complete the work. Pouring of the mixed grout should be started from one side only to avoid air entrapment. To obtain maximum flow distance, a side shutter feed between 100mm to 250mm high should be erected and used to build the required head.

Formwork preparation:

The form material should be waterproof and resistant to hydrostatic forces of the grout. Formwork installation should be done against the possible leakage of the cement paste. An opening should be designed in the formwork with a width of 5 cm at minimum for pouring the grout. For providing a constant pressure for easy compacting of the grout the forms should be as high as possible in the pouring side. In grouting of huge base plates, special pipe and pump systems can be used or grout can be prepared with 5% extra water. For preventing the pressure releases, the forms should be placed without any tolerances and gaps between the concrete and form material.

Curing

Since HighFlow Grout65 is a cementitious based material, it should be treated in a manner similar to concrete. Curing can be conducted by either using concrete curing compound such as SuperCure 1000 or by using wet hessian and polyethylene.

Yield

Approximately 13-13.5 liter/25kg bag depending on consistency.

Notes

- At low temperature (Below 8 °C), warm water is recommended to achieve the early strength. And the formwork is recommended to be kept longer time.
- At high temperatures (40 °C and above), cold water (less than 20 °C) must be used for mixing.

Disposal

Empty packages can be thrown to the collection bins according to regional-local regulations or recycling rules. After drying up and hardening the used waste material, throw it away as construction waste material. It is dangerous to dispose of product wastes by burning them.

Points to Take into Consideration

Keep the products in places out of reach of children. Always keep the cover of the products closed. It is recommended to wear gloves and goggles during operation. In case of contact of skin with the material, it should be washed with soap and water immediately. In case of contact with the eye, see your doctor immediately.

General Considerations

Above-mentioned product information and descriptions are prepared for guidance purposes as a result of our experiences and meticulous studies. The variety of related materials and their different construction and operation conditions can not be controlled or influenced by us individually. For applications beyond our control, the guarantee status is only limited to the quality of sold product. Except the manufacturing of the product, no guarantee is given for application. This technical sheet invalidates all the existing sheets. The quality of the performed job may vary depending on your professional use of the product. If you are hesitant, make a little test or get technical help.

HighFlow Grout 65

Cementitious high strength non-shrink precision grout

Standards

Complies with EN 1504-6 and EN 1504-3/R4 ASTM C1107 Type B and Type C.

Cleaning

After the application all tools should be cleaned with water. HighFlow Grout65 can be cleaned with only mechanical abrasion after hardening.

Packaging

HighFlow Grout65 is available in 25 Kg bags.

Storage

HighFlow Grout65 has a shelf life of 24 months from date of manufacture if stored at temperatures between +2 °C to 50 °C .

If these conditions are exceeded, Ridge technical department should be contacted for advice.

Cautions

Health and safety

Since it is powder containing Portland cement and sand, HighFlow Grout65 may cause irritation to skin or eyes. In case of accidental contact with eyes, immediately flush with plenty of water for at least 10 minutes and seek medical advice.

Fire

HighFlow Grout65 is nonflammable.

Disposal

Empty packages can be thrown to the collection bins according to regional-local regulations or recycling rules. After drying up and hardening the used waste material, throw it away as construction waste material. It is dangerous to dispose of product wastes by burning them.

Points to Take into Consideration

Keep the products in places out of reach of children. Always keep the cover of the products closed. It is recommended to wear gloves and goggles during operation. In case of contact of skin with the material, it should be washed with soap and water immediately. In case of contact with the eye, see your doctor immediately.

General Considerations

Above-mentioned product information and descriptions are prepared for guidance purposes as a result of our experiences and meticulous studies. The variety of related materials and their different construction and operation conditions can not be controlled or influenced by us individually. For applications beyond our control, the guarantee status is only limited to the quality of sold product. Except the manufacturing of the product, no guarantee is given for application. This technical sheet invalidates all the existing sheets. The quality of the performed job may vary depending on your professional use of the product. If you are hesitant, make a little test or get technical help.